

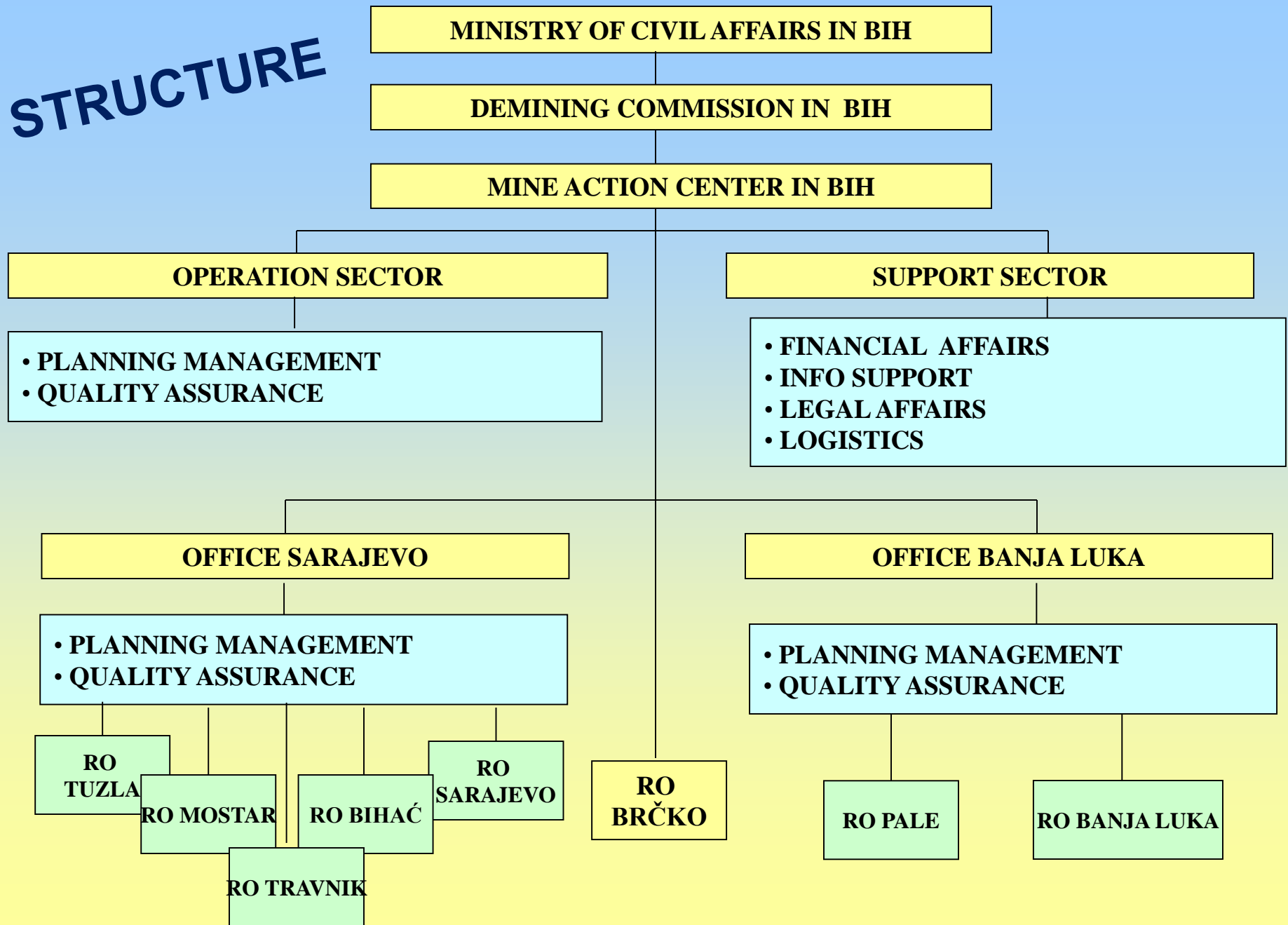


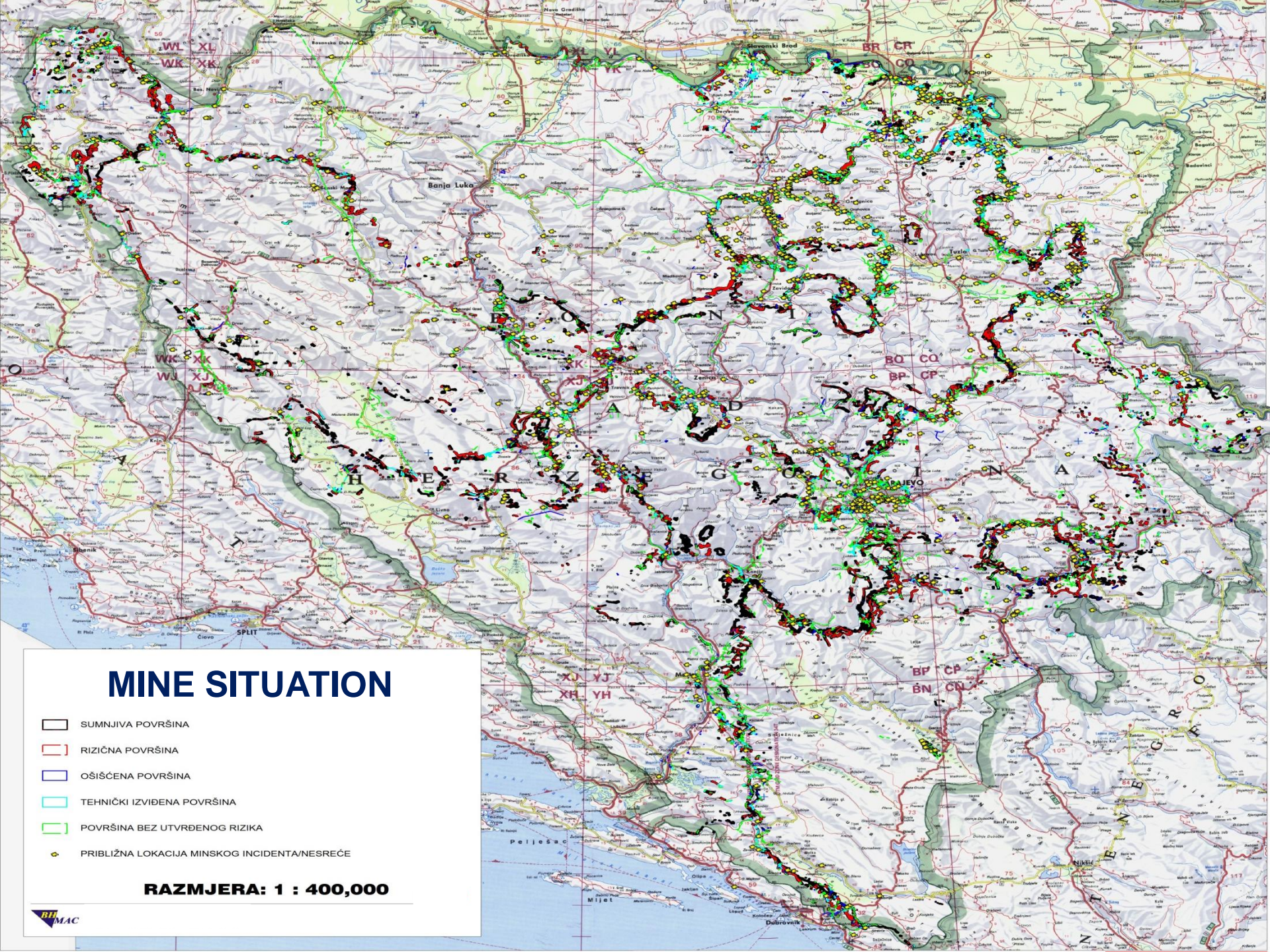
MINE SITUATION IN B&H

Integration of Mine Action with STG

Febryar, 2018

STRUCTURE





MINE SITUATION

- SUMNJIVA POVRŠINA
- RIZIČNA POVRŠINA
- OŠIŠĆENA POVRŠINA
- TEHNIČKI IZVIĐENA POVRŠINA
- POVRŠINA BEZ UTVRĐENOG RIZIKA
- Približna lokacija minskog incidenta/nesreće

RAZMJERA: 1 : 400,000

THE SIZE OF THE PROBLEM

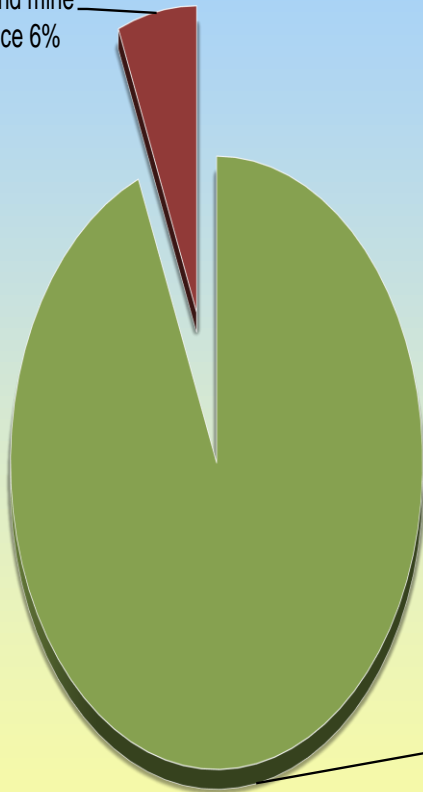
ADMINISTRATIVE LEVEL	Total mine suspect hazardous area Km ²	Mine suspect hazardous area/categories of priority(km ²)			Cluster munition suspect hazardous area km ²
		I category	II category	III category	
UNSKO-SANSKI KANTON	103.85	44.69	39.95	19.21	0.07
POSAVSKI KANTON	17.64	5.28	10.33	2.03	0.00
TUZLANSKI KANTON	80.19	19.38	18.63	42.18	0.68
ZENIČKO-DOBOJSKI KANTON	120.70	30.79	15.33	74.58	2.08
BOSANSKO-PODRINJSKI KANTON	46.87	5.26	9.75	31.86	0.00
SREDNJE-BOSANSKI KANTON	123.74	26.97	39.62	57.15	1.78
HERCEGOVAČKO-NERETVANSKI KANTON	156.45	17.61	28.47	110.37	0.00
ZAPADNO-HERCEGOVAČKI KANTON	0.31	0.00	0.00	0.31	0.00
KANTON SARAJEVO	73.40	21.50	13.52	38.38	0.38
KANTON 10	86.58	11.91	14.38	60.29	0.35
FEDERACIJA BIH	809.73	183.39	189.98	436.36	5.34
REPUBLIKA SRPSKA	236.37	68.99	89.39	77.99	1.13
DISTRIKT BRČKO	15.22	1.80	10.34	3.08	0.00
BOSNA I HERCEGOVINA	1061.32	254.18	289.71	517.43	6.47

2,01 % of area in B&H

80.000 mines/ERW are left behind

RESULTS ON REDUCED SHA 1996-2017

193,5 km² Tech.
survey and mine
clearance 6%



2.925 km² Non-
tech./General/
Systematic
survey
94%

Year	Demined (km ²)	AP	AT	ERW
1996	8.50	32,975	5,927	31,774
1997				
1998				
1999				
2000				
2001				
2002	6.58	1532	251	1,575
2003	6.51	1495	156	1,066
2004	6.61	3016	210	1,523
2005	10.60	2120	183	1,475
2006	10.26	3506	164	1,499
2007	10.32	1843	186	1,007
2008	14.76	2,567	229	3,117
2009	12.74	2,112	150	877
2010	11.74	2,350	114	1,130
2011	12.69	1,816	389	5,346
2012	8.76	904	75	636
2013	11.06	1,700	100	941
2014	11.87	1,853	118	2,304
2015	10.03	1,654	129	667
2016	11.72	1,313	63	1,192
2017	2.51	745	9	89
Total	193.34	63,501	8,453	56,218

✓ TOTAL RELEASED SHA 3.119 km²

MRE & LMVA

MRE

- ✓ Public dissemination, education and connection with the community

2009-2017:

210.000 persons was educated
79.000 signs of urgent marking was set up
80 km² marked with permanent signs

MVA

- ✓ Maintenance of a central database and reporting

2009-2017:

10.000 victims and their family members received help
through NGO projects



FUNDING OF MINE ACTION IN B&H

SOURCES FROM B&H (30%)

- ✓ Budget of B&H (funding by BHMAC and AF BiH)
- ✓ Budget of entities (funding by Civil protections)
- ✓ The government of Brcko District
- ✓ Budget of cantons and municipalities
- ✓ Public enterprises and private sector

INTERNATIONAL SOURCES (70%)

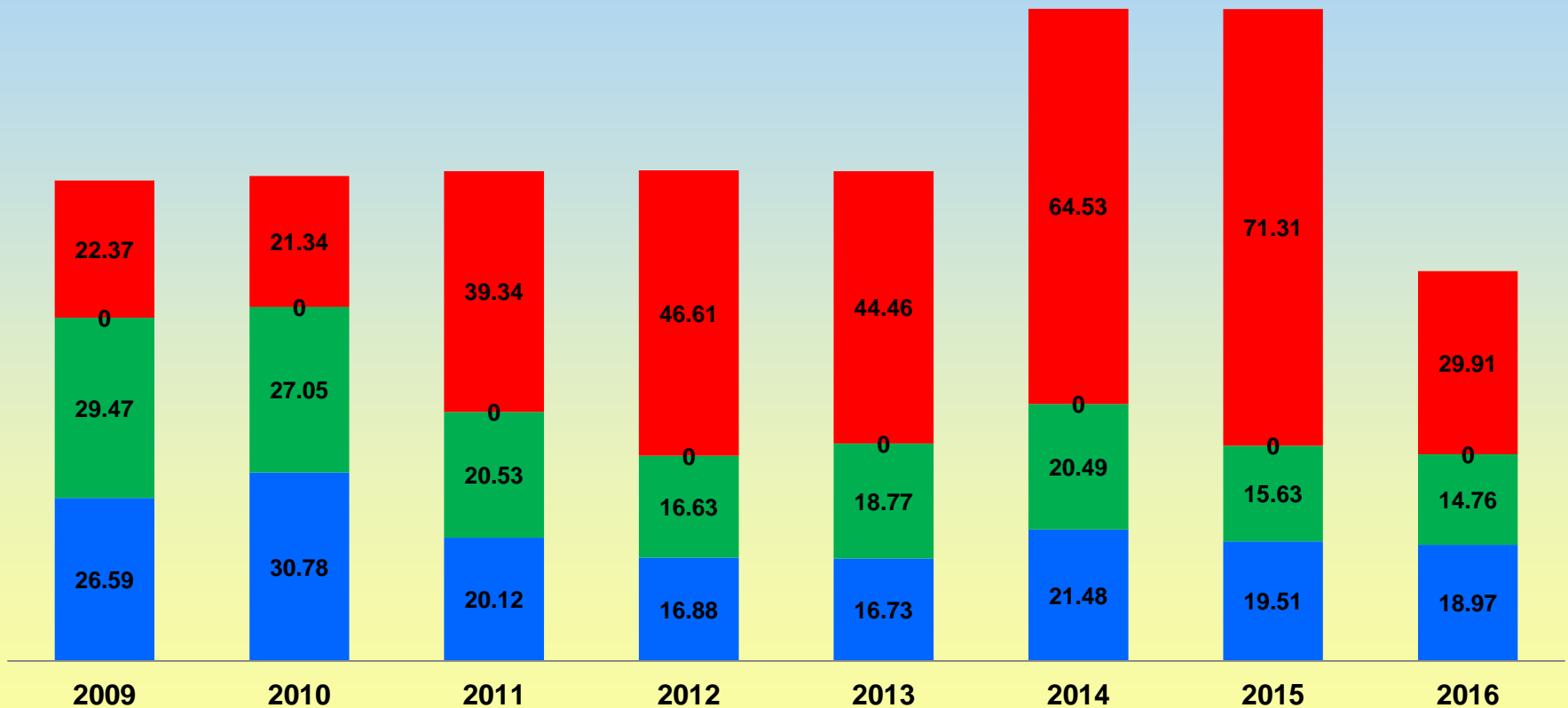
- ✓ ITF (INDIVIDUAL COUNTRY DONORS)
- ✓ EU (IPA)
- ✓ UNDP



FUNDING OF MINE ACTION IN B&H

2009-2016

■ B&H ■ Donors ■ Additional B&H ■ Not ensure



BIH sources: 171,1 million BAM SOURCES BY DONORS: 163,3 million BAM

Total : 334,4 milliona BAM

CAPACITIES

26 ACCREDITED ORGANISATIONS FOR MINE ACTION IN B&H

1.200 ACCREDITED DEMINERS AND OTHER OPERATIONAL STAFF

Government demining organizations

Armed forces BiH

Federal administration of Civil Protection

Republic administration for CP Republic of Srpska

Civil Protection Brčko District

Red Cross



Reporting

Reporting is conducted quarterly, i.e. every four months.

The Plan and the Report are adopted by the Demining Commission in BiH.

Planning processes are related to the wider developmental goals:

- **Local community;**
- **Municipality**
- **Cantons in Federation BiH;**
- **BHMAC;**
- **Entity Governments (adopt the lists of priorities);**
- **Demining Commission in BiH**
- **Council of Ministers BiH**

Prioritizacion

The request for priority setting procedure for a certain location is submitted as a rule by municipalities or other interested subject. The request should contain the explanation on use and the need for demining of a certain location. BHM MAC undertakes further activities of general survey for the location in order to estimate the level of threat.

The Priorities Proposition List is created by BHM MAC in cooperation with the representatives from the local authorities. The Priorities List should equally contain interests of all the local communities in BiH.

In accordance with the Demining Law in BiH, the Priority Lists are adopted by Entity governments once a year, as a rule before demining season starts, and based on the proposition submitted by BHM MAC.

BHM MAC is conducting coordination and control of the realization of the Priorities List in accordance with the annual operational plan and Standard Operational Procedures, then submits the report to the Council of Ministers BiH at least once a year.

Criteria for Prioritization

Following demining projects are excluded from the priority setting procedure:

Areas of mass graves where demining is conducted after the request of the Commission for Missing Persons or the request of a judicial body.

The sites of plane crashes, fires, floods and other accidents where demining is necessary because of the protections and saving of people and property, when done by the request from authorized state bodies.

Military zones, by request of the Ministry of Defence, where demining is conducted by the demining deams of the Armed Forces BiH.

Demining projects which are integral part of a larger investment development project, where demining is financed by the investor.

Targeted demining projects for insured funds under specific agreements which are not contained by the Priorities List for a certain year

Projects excluded from the priority setting procedure will be called projects of the **zero category priority**.



Agenda 2030 is comprised of 17 new Sustainable Development Goals – SDGs i.e. global goals, that will govern policy and finance for the next 15 years, starting with the historical obligation to root out the poverty. Everywhere. For good.

INTEGRATION OF MINE ACTION WITH SUSTAINABLE DEVELOPMENT GOALS

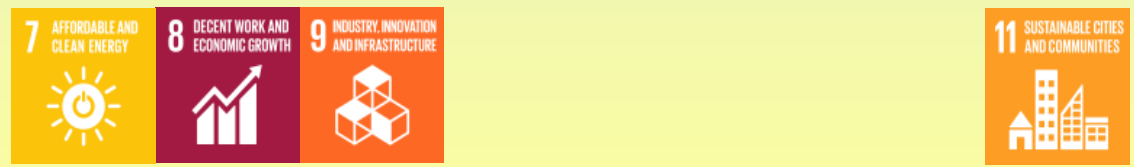
According to the study, the process of land released for use enables the removal of restraints and provide access to a variety of basic social services, including health services (sustainable development goal 3), education (sustainable goal 4), water supply and sanitary services (sustainable development goal 6).



Moreover, the approach to economic and natural resources strengthens the existence and builds resilience in former affected communities, where the communities will deal with poverty and uncertainty of sustenance (sustainable development goals 1 i 2). Gender sensitive mine action will also promote higher level of gender equality (sustainable development goal 5) through enhancement of female persons both of age and under age through assistance, operations and job opportunities.



Economy can grow along with mine action which will offer decent jobs and basic skills relevant for various vocations and sectors (sustainable development goal 8), infrastructure can be built (sustainable development goal 9), and modern energy may become a public for everybody (sustainable development goal 7).



In urban post-war environments, the removal of mines and explosive devices is the precondition for rebuilding of the residential capacity or transport infrastructure. (sustainable development goal 11).

CHALLENGES

CHANGES AND AMMENDMENTS IN DEMINING LAW IN B&H

- ✓ Working group for this activities was formed and approved by the Council of Ministers in B&H and completed the draft of the law

MA REVISED STRATEGY 2009-2019

- ✓ Operational and financial plans were implemented with about 50% in the period from 2009-2016
- ✓ Establish output National Mine Action Strategy in cooperation with GICHD for 2018-2025

UPDATE STANDARDS AND SOPs

- ✓ Establish working group for update of all STANDARDS and SOPs chapters
- ✓ Capacite to integration mine action in to SDG and report results



THANK YOU

MINE ACTION CENTER IN BIH



PHONE: 033 253 800

FAX: 033 464 565

www.bhmac.org : INFO@bhmac.org